

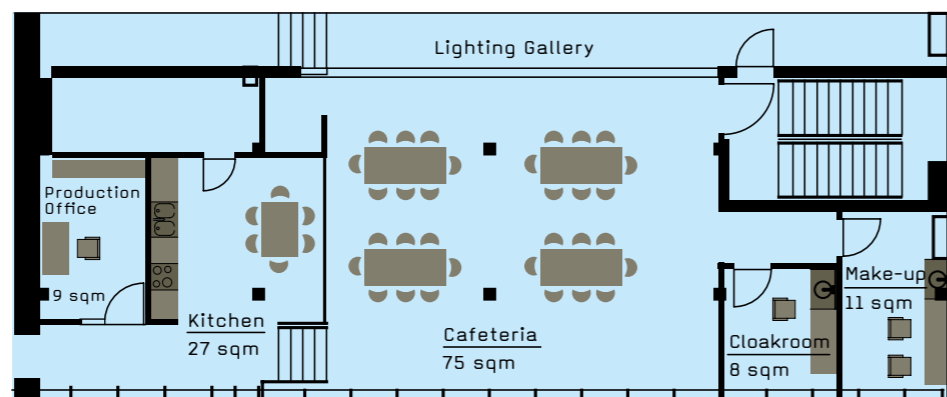
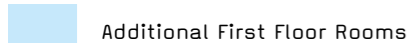
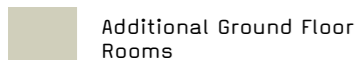
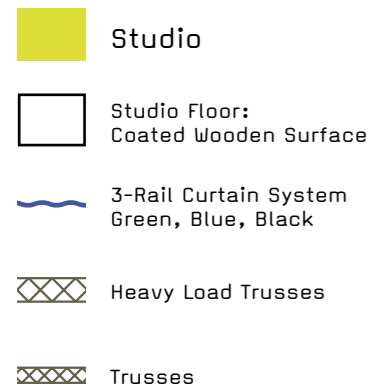
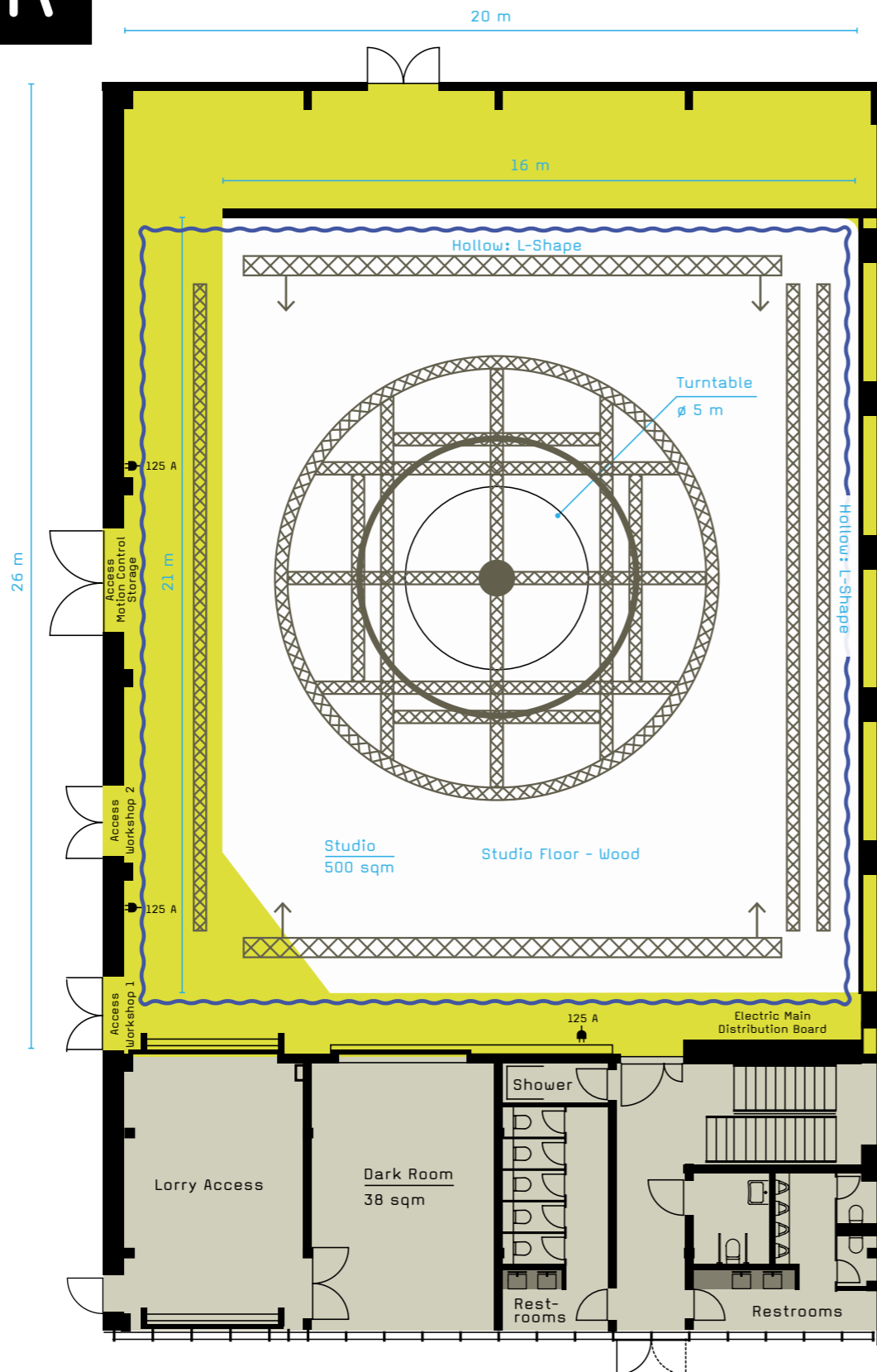
FIRST-CLASS STUDIO FOR
FILM PRODUCTION AND EVENTS.



MAXIMUM ROOM TO MOVE FOR VISIONS.

The Film Studio for realising challenging projects.
The Hangar Studio convinces with its sophisticated
technology and its flexible usage possibilities.

Conveniently located directly next to the motorway,
you can reach the BER airport in just a few minutes.



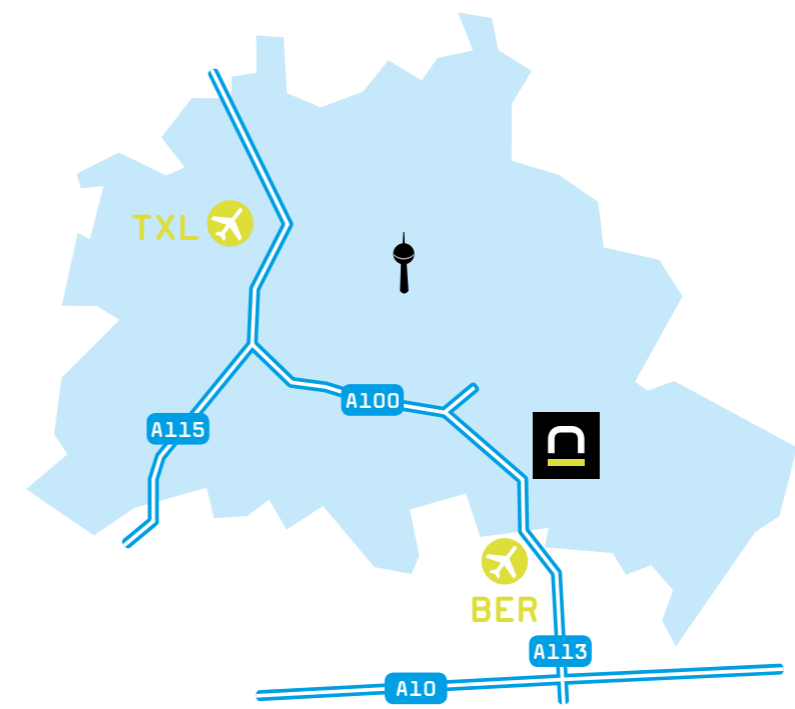
PERFECTLY EQUIPPED.

- 500 sqm Studio Area (L: 26.30 m, W: 20.50 m)
- Hollow in L-Shape, white (L: 21 m, W: 16 m, H: 7 m)
- Studio Floor: Coated Chipboards
- Lorry Access (Sectional Door H: 3.80 m, W: 3.50 m)
- 2 Lighting Galleries (63 A distributor, Artnet, DMX, LAN)
- Ancillary Rooms: Studio Extension 38 sqm | Cafeteria 75 sqm | Kitchen | Make-up | Cloakroom | Production Offices | 2 Workshops | Camera Storage | Motion Control Storage | Postproduction Studios
- Storage Area 200 sqm
- 3-Rail Curtain System: Black, Green, Blue (full 360°, H: 7 m)
- Turntable flush with the floor, \varnothing 5 meters (in the middle of the Studio | Load: static 12,000 kg, dynamic 5,000 kg | Speed controllable up to 8 rpm | via Slip Ring: 3 x 16 A, Artnet, DMX, LAN)
- Rotating Circular Truss, \varnothing 12 meters (Load: 2,000 kg | height-adjustable via 5 C1 chain hoists | synchronizable with the Turn Table, via Slip Ring: 125 A distributor, Artnet, DMX, LAN, compressed air)
- 2 Heavy Load Trusses (Load: 2,000 kg | horizontally- and height-adjustable | 125 A distributor, Artnet, DMX, LAN, compressed air)
- 1 Truss (Load: 1,500 kg | height-adjustable | 63 A distributor, Artnet, DMX, LAN, compressed air)
- 2 Trusses for Cyclorama Lights (63 A distributor, Artnet, DMX, LAN, compressed air)
- 3 Trusses (63 A distributor, Artnet, DMX, LAN)
- Light Sail 12 m x 6 m (freely positionable in the room)
- Connection to Medium-Voltage Network | separate Transformer 630 kVA
- 3 Wall Sockets 125 A each
- 2 Movable Distributors 125 A each
- Power Consumption and Performance Values accessible online at all times
- Light Mixing Console | complete Artnet, DMX & LAN infrastructure
- Electronic Access Control | Alarm System
- Red Light at all access doors
- Wireless Internet Access (ac, n)
- Articulating Boom Lift JLG E400AJPn (Platform height 12.19 m, lateral reach 6.8 m)
- Portal Crane (1,000 kg bearing load)

HANGAR



PERFECT LOCATION.



Hangar
Ludwig-Boltzmann-Straße 1
12489 Berlin
Germany

Fon +49 (30) 221820-255
Fax +49 (30) 221820-200

mail@hangar.de
www.hangar.de

a division of
visavis Filmproduktion GmbH